

## Midexx Monitor Software Quick Guide

### Requirement

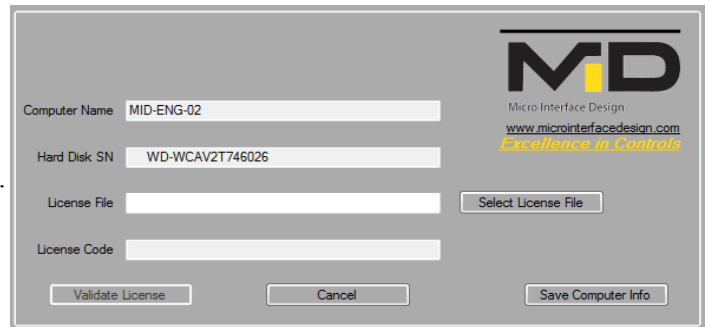
- PC running windows operating system.
- MID Midexx Remote Monitoring and Control Card (RMC Card)

### Setup Instruction

- Run the setup wizard called Midexx Monitor Installer.
- Start Midexx Monitor software from the desktop shortcut or locate the Micro Interface Design file in the start menu.
- When the software starts, Click the top left button called *Add Midexx*. Once Clicked, The license window will pop-up.
- Click *Save Computer Info*, then email the file to the email Address below to obtain a license file.

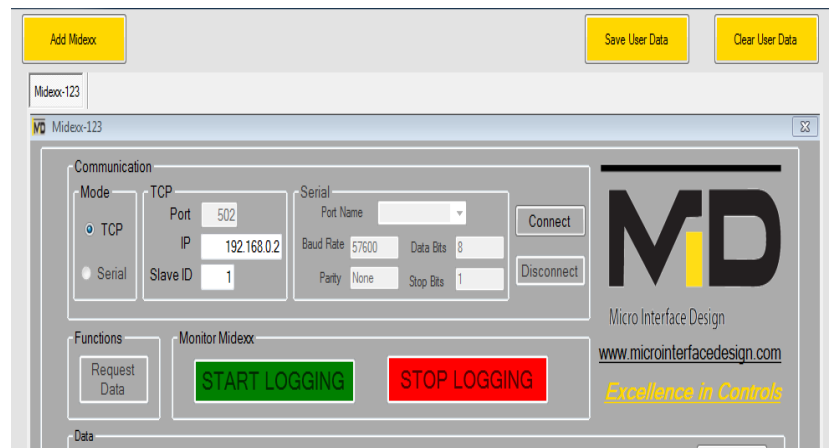
[info@microinterfacedesign.com](mailto:info@microinterfacedesign.com)

- Once your email is received, Our licensing department will Generate a license file for your computer and email it back to you.
- Download and save the file to the micro interface design Directory on the c drive under Program Files (x86).
- Click *Select license file* button then navigate to the license file.
- Open the file and click the *Validate License* button. A message should appear to confirm the validation process.
- Once Validated, you can close the licensing window.



### Adding Units to the Midexx Monitor

- Press the top left button *Add Midexx* to add a new Midexx unit.
- A menu will pop-up asking to enter a name for this unit.
- Once the name is entered, the Midexx Monitor Panel will appear.
- Enter the IP address of the MID-RMC Card.
- if you are connecting directly to the RMC Card, then Use the default IP Address 192.168.1.3. If the RMC Card is connected to a local network, then use the IP Address assigned by the router.



Note: it is recommended to assign a static IP Address to the RMC

Card. Ask for assistance from your IT department. See WiFi Board-Network Settings Manual for help on how to connect RMC Card to local network.

- Click *Connect* button, if the connection is successful, the *Connect* button back ground colour will change to green.
- Now, The *Request Data* button will be enabled, click it to retrieve data from the Midexx Unit.

## Data Logging Instruction

- Once a valid data packet is received from the Midexx unit, the *start logging* button will be enabled.
- Click *Start Logging* button, a window will pop-up asking the user to specify a location to save the file.
- After saving the file, the Midexx Monitor Panel will start to automatically request and log data from the Midexx unit.  
 Note: Data will be logged after each shot dispensed by the Midexx unit.  
 Note: Do not open the file while the software is logging.
- Use the *Stop Logging* button to stop logging data.
- Use the *Communication Log* at the bottom of the panel to confirm the logging process.
- Now, you can repeat the above steps to add another Midexx unit.
- Use the tabs on top of the panel to navigate between the Midexx units.
- Use *Save User Data* button to save the current taps and connection settings.
- Use *Clear User Data* button to clear and close all the open tabs.

