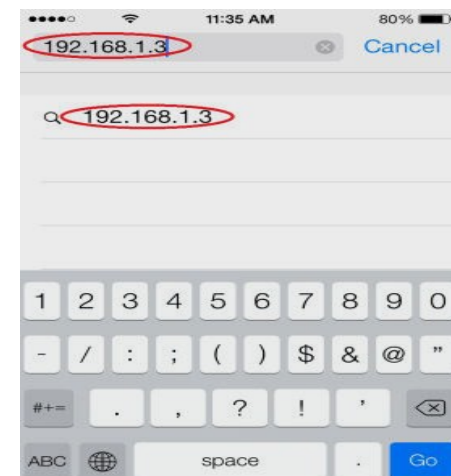


## MID WIFI BOARD - CONNECT TO NETWORK

### CONNECT TO THE WI-FI BOARD

- Connect the Wi-fi board to Midexx and wait until the Green LED starts to blinking.
- Navigate to your device Wifi-Setting and look for Midexx-( Midexx Serial Number) as shown in the picture to the right.


- Select the Midexx that you want to connect to, you will be asked to enter the Wi-Fi Password, the password can be found on the side of wifi board as shown below.
- enter the Wi-Fi password.

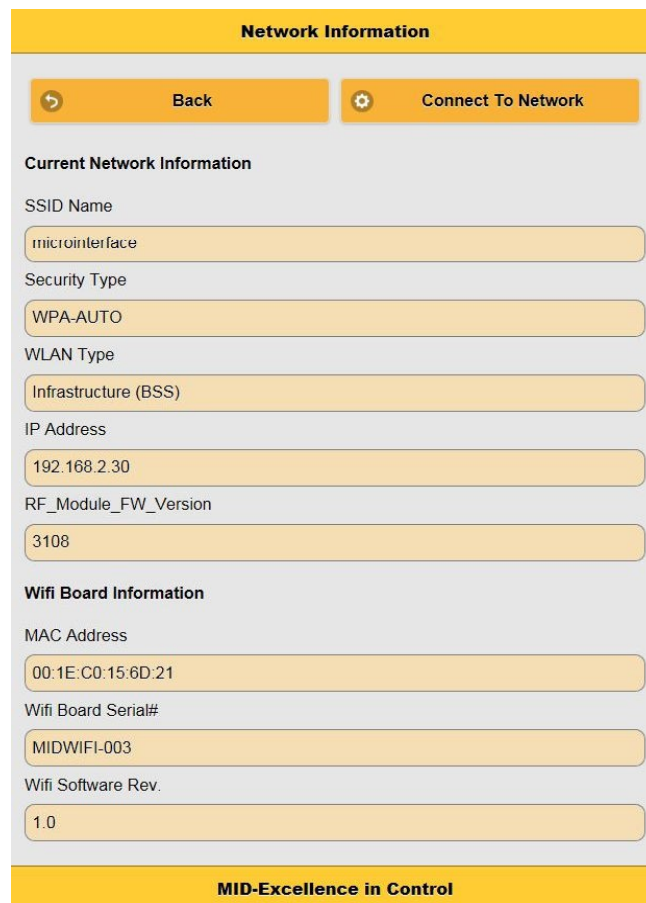


- once successfully connected, navigate to your device web browser and enter the following address: 192.168.1.3

## NETWORK SETTING

To view current network setting

- Click on the (!) mark icon located at the right bottom of the home page 
- The Network Information page will appear
- You will be able to find all the information related to the current network, the ip address to access the Midexx Panel, and the MAC Address, Serial number, and the software version of the Wi-Fi Board
- Note: you will need the MAC Address when attempting to connect to local network. the MAC Address can be found on the side label of the wifi board



**Network Information**

Back Connect To Network

**Current Network Information**

SSID Name  
microinterface

Security Type  
WPA-AUTO

WLAN Type  
Infrastructure (BSS)

IP Address  
192.168.2.30

RF\_Module\_FW\_Version  
3108

**Wifi Board Information**

MAC Address  
00:1E:C0:15:6D:21

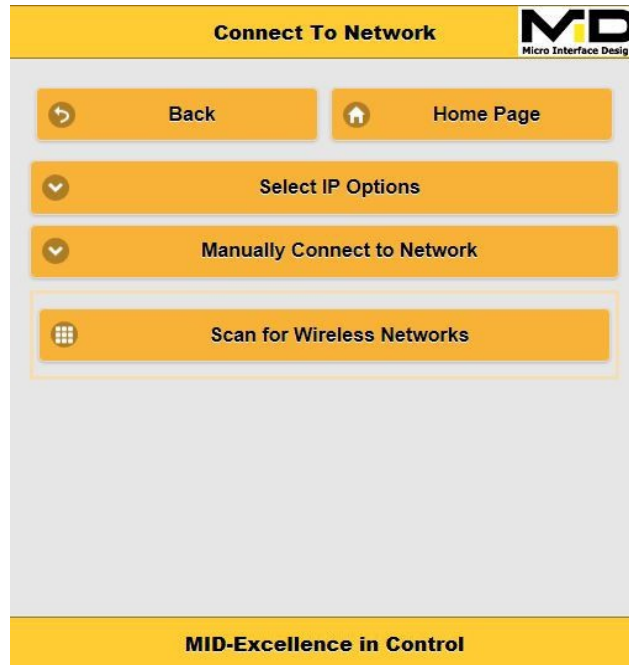
Wifi Board Serial#  
MIDWIFI-003

Wifi Software Rev.  
1.0

**MID-Excellence in Control**

## CONNECT TO LOCAL NETWORK

- Press the Connect to Network button located in Network Information page
- The Connect to Network page will appear as shown below.



### IP ADDRESS OPTIONS:

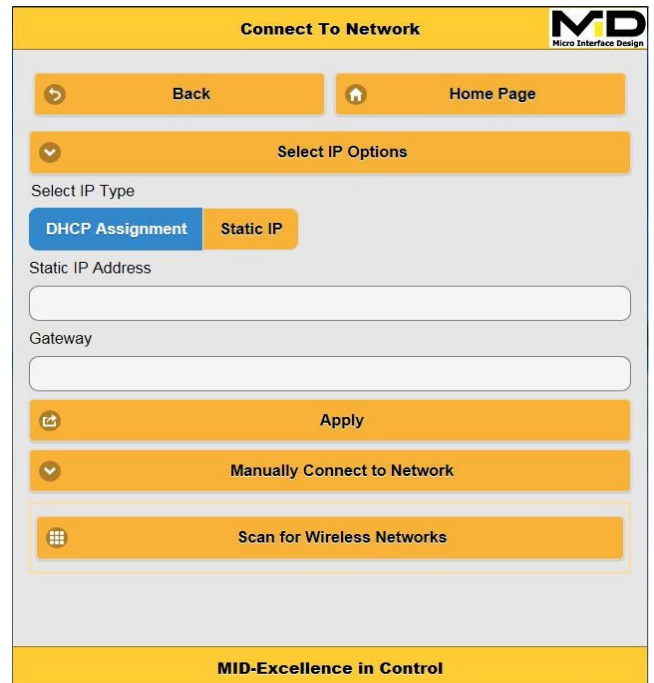
There are two IP address options under Select IP Options

#### 1. DHCP ASSIGNMENT

Choosing this option will allow the router to assign an available IP address to Wi-Fi board. The user will have to log in to the router setting and using the MAC Address of the Wi-Fi board, the user will find the IP address that been assigned by the router.

#### 2. STATIC IP

Choosing this option will allow the user to select an IP address. User will have to provide an IP address and the gateway address (IP address of router). (Ask network administrator for help)

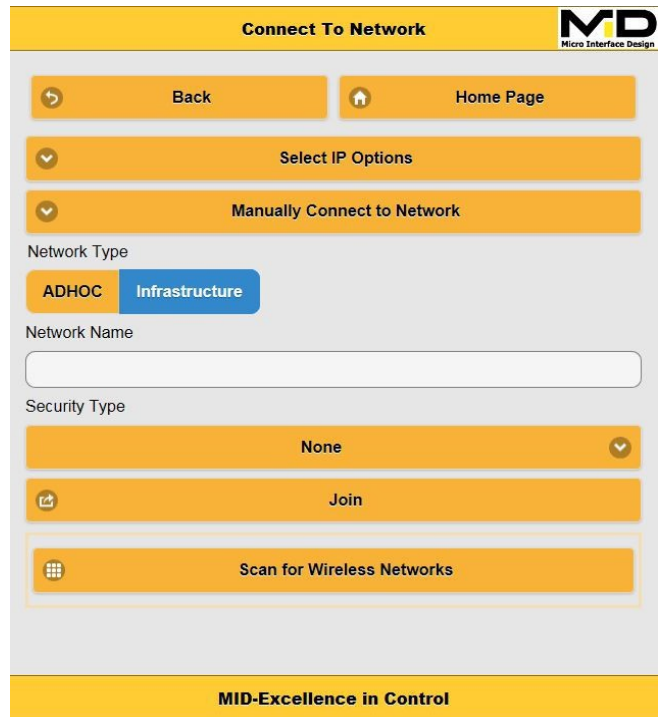


METHODS OF CONNECTION:

There are two methods to connect to a network

1. MANUALLY CONNECT TO A NETWORK

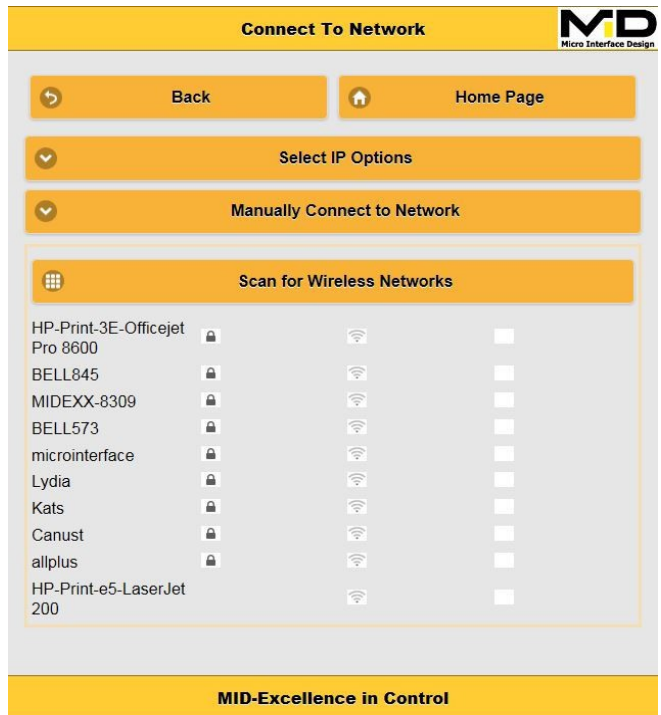
- When the Manually Connecting to Network button is pressed, a drop down menu will appear as shown in the picture to right.
- Select the network type ("infrastructure " for router local access)
- Enter the network name and select the security type and press join.
- If prompted, Enter the network password and press OK.
- The Reconnecting page will appear, follow the instruction written on that page to re-gain access to Midexx Panel.



2. SCAN FOR WIRELESS NETWORK

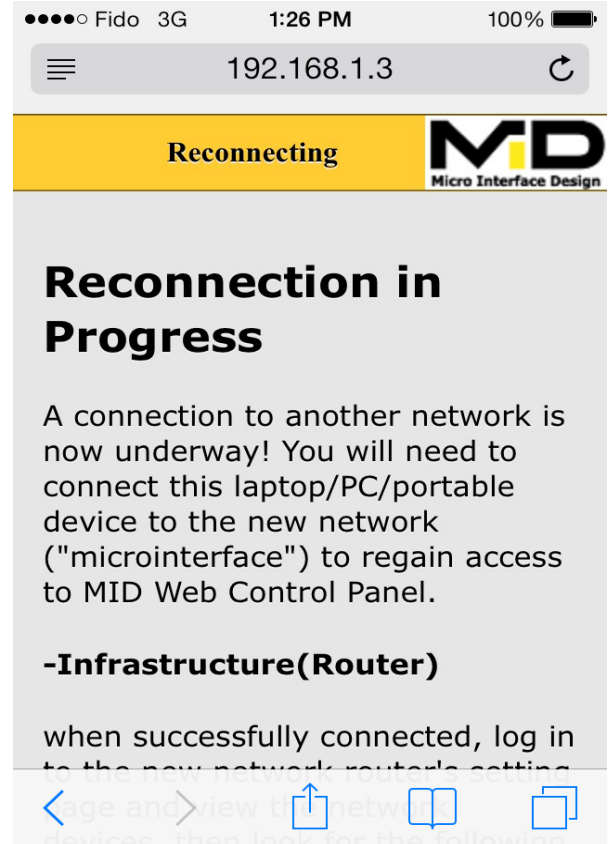
- When Scan for Wireless Networks button pressed, the device will perform scan and show the wireless networks available.
- Select the desired network and enter the network password if prompted.
- The Reconnecting Page will appear, follow the instruction written on that page to regain access to Midexx Panel.

••• Note: please note that the device doesn't have the ability to provide feedback weather the network user name and password are correct or not. if connection is successfully established, the device MAC address will appear under your router settings.



## NETWORK RECONNECTING PAGE INSTRUCTION

- If Static IP address is chosen, then Connect your device to the same Network and use the IP address entered in the Static IP option.
- If DHCP Assignment is chosen, then follow these steps:
- Connect your device to the same network that you connected the wifi board to.
- Login to your router settings page (Ask your network administrator for help).
- Navigate to the connected devices page and look for the MAC Address of the wifi board to find the IP address that has been assigned by the router.
- If you couldnt find the MAC address, this means that connection between wifi board and router was not successful and you need to push and hold the reset button on wifi board for 10 sec, then, connect to wifi board to re-attempt connecting to the network.



## RESETTING THE NETWORK SETTING TO MANUFACTURE DEFAULT SETTINGS

In order to reset the network setting to manufacture setting, push and hold the reset button for 10 seconds. the green led will start to blink twice a second.